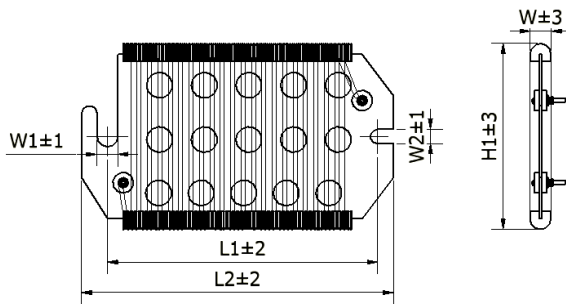


● 产品介绍 Product Introduction:

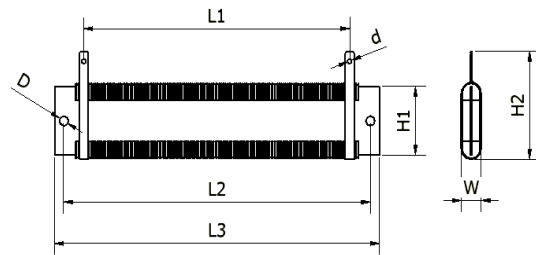
BPR 系列电阻是由板材圆线绕或扁线绕线而成的电阻器，广泛应用于电梯、起重机、港机、轧机、卷扬机、发电机、变频器等制动和负载。BPR Series is made of plate round wire wound or flat wire wound. Widely used in braking and overload of elevators, crane, Port machinery, rolling mill, winch, generator, transducer and so on.
Transducer and so on.

● 技术参数 Technical Parameters:

- 1、可单独使用也可灵活组合使用，功率负荷大，散热条件好及长寿命设计。It can be used alone, also be used in combinations, high power load, good performance in heat radiation and long-life.
- 2、环境温度 Ambient Temperature: +70°C
- 3、额定功率 Rated power 400W 500W
- 4、绝缘电压 Isolation voltage: AC2.5KV/1min 50Hz
- 5、阻值允许偏差 Resistance tolerance: $\pm 10\%$
- 6、使用温度范围 Operating temperature range: $-55^{\circ}\text{C} \sim 315^{\circ}\text{C}$
- 7、防护等级 Protection Grade: IP00
- 8、适用范围 The range of application: 广泛用于制动电路及吸收电路 Widely used in braking circuit and absorption circuit.



图一



图二

● 规格尺寸 Dimensions:

图号	功率 Power	尺寸 Dimensions (mm)									
		L1	L2	L3	H1	H2	W	W1	W2	D	d
图二	180W	161	206	226	40	76	24	/	/	6.5	5
	240W	201	246	266	40	76	24	/	/	6.5	5
	300W	281	326	346	65	106	24	/	/	8.5	5
	360W	295	340	360	70	111	24	/	/	10	5
	420W	381	426	446	80	128	24	/	/	10	5
图一	300W	260	300	/	181	/	/	20	14	/	/
	400W	360	400	/	161	/	/	20	14	/	/
	500W	390	430	/	224	/	/	20	20	/	/

备注 Remark: 功率及尺寸可以根据客户的需求定做。The Power and dimension can be especially customized for customers.

● 料号规则 Part No. Regulation:

BPR	300W	-10%	0	B001	20R
产品名称 Product Name	功率 Power	精度 Tol.	特殊码 Special Code	成型 Forming	阻值 Ohm
板形电阻器		$\pm 10\%$			20R=20Ω

工业类
INDUSTRY RESISTORS